

WHERE INNOVATION MEETS INFRASTRUCTURE



OSHKOSH® S-SERIES FRONT DISCHARGE MIXER

The building industry is trending up. And you'll find the S-Series on job sites throughout the country, helping to move projects forward.

*WE'VE ESTABLISHED
INDUSTRY LEADERSHIP,
ONE PROJECT AT A TIME.*

We're welcomed on job sites because, from Day One, we've listened to our customers and continually improved our products.

It's not easy being the industry leader. But it's not complicated. Provide reliable and productive vehicles. Work to maximize payload. Back them with the industry's finest service and support network. Offer financing and stock programs that demonstrate an understanding of your business.

Of course, it helps to have Oshkosh's other industry-leading brands in our corner—companies who've forged excellent reputations in severe-duty environments.





INNOVATION IS A TRADITION HERE, NOT A BUZZWORD.

Innovation can be big: Industry standard McNeilus steel drum mixers. Innovation can be detailed: Hood styling that improves fuel efficiency and engine cooling. Stainless steel fuel lines that eliminate rubber hoses. And the innovation is constant – because every site is a new challenge and every job is important.



GREEN RUNS DEEP.

We've been producing alternative-fueled compressed natural gas [CNG] powered vehicles since 2006 because the advantages to ready-mix producers are significant. We even built our own CNG fueling station on-site so that we could fully fuel and test our vehicles prior to shipment. By working closely with all chassis manufacturers and Cummins-Westport, we can ensure that our technology benefits the environment, reduces our dependence on foreign oil, and most importantly, improves your bottom line. No wonder ready-mix producers both big and small are moving to CNG.



*FOR PERFORMANCE
ON THE JOB—
AND OVER THE
LONG HAUL.*

IT STARTS WITH THE MIXER.

The industry leader in performance, this quality McNeilus steel drums delivers consistent performance, and features a 45" drum opening that is the largest in the business.

A white McNeilus steel drum mixer truck is shown in operation on a construction site. The truck is dumping material from its large drum into a large pile of rocks and gravel. The truck features a large drum, a cab with a BP logo, and various lights. Callout boxes highlight specific features: integrated LED turn signals, ergonomic cab, tighter cramp angle, and legendary Oshkosh transfer case.

Integrated LED turn signals, work lights, and strobe lights.

Ergonomic cab is optimized for unsurpassed visibility and easier troubleshooting.

Tighter cramp angle for enhanced maneuverability.

Legendary Oshkosh transfer case and proprietary axles developed for military vehicles. They are, literally, battle-tested.

*FOR PERFORMANCE
ON THE JOB—
AND OVER THE
LONG HAUL.*

IT STARTS WITH THE MIXER.

The industry leader in performance, this quality McNeilus steel drums delivers consistent performance, and features a 45" drum opening that is the largest in the business.

A white McNeilus steel drum mixer truck is shown in operation on a construction site. The truck is dumping material from its drum. The image highlights several key features: integrated LED turn signals, work lights, and strobe lights; an ergonomic cab optimized for visibility and troubleshooting; and a tighter cramp angle for enhanced maneuverability. The truck is a white Oshkosh transfer case model, featuring a 45-inch drum opening. The front of the truck displays the number 57-1879 and the slogan 'PLEASE HELP BACK SAFELY'. The background shows a rugged, rocky terrain.

Integrated LED turn signals, work lights, and strobe lights.

Ergonomic cab is optimized for unsurpassed visibility and easier troubleshooting.

Tighter cramp angle for enhanced maneuverability.

Legendary Oshkosh transfer case and proprietary axles developed for military vehicles. They are, literally, battle-tested.

*FOR PERFORMANCE
ON THE JOB—
AND OVER THE
LONG HAUL.*

IT STARTS WITH THE MIXER.

The industry leader in performance, this quality McNeilus steel drums delivers consistent performance, and features a 45" drum opening that is the largest in the business.

Integrated LED turn signals, work lights, and strobe lights.

Ergonomic cab is optimized for unsurpassed visibility and easier troubleshooting.

Tighter cramp angle for enhanced maneuverability.

Legendary Oshkosh transfer case and proprietary axles developed for military vehicles. They are, literally, battle-tested.

*FOR PERFORMANCE
ON THE JOB—
AND OVER THE
LONG HAUL.*

IT STARTS WITH THE MIXER.

The industry leader in performance, this quality McNeilus steel drums delivers consistent performance, and features a 45" drum opening that is the largest in the business.

A white McNeilus steel drum mixer truck is shown in operation on a construction site. The truck is dumping material from its large drum. The drum has a 45-inch opening. The truck features a white cab with a BP logo. Callout boxes highlight specific features: integrated LED turn signals, work lights, and strobe lights; ergonomic cab optimized for unsurpassed visibility and easier troubleshooting; tighter cramp angle for enhanced maneuverability; and a legendary Oshkosh transfer case and proprietary axles developed for military vehicles, which are literally battle-tested. The truck is white with a large drum and a white cab. The drum has a 45-inch opening. The truck features a white cab with a BP logo. The truck is shown in operation, dumping material from its drum. The truck is white with a large drum and a white cab. The drum has a 45-inch opening. The truck features a white cab with a BP logo. The truck is shown in operation, dumping material from its drum.

Integrated LED turn signals, work lights, and strobe lights.

Ergonomic cab is optimized for unsurpassed visibility and easier troubleshooting.

Tighter cramp angle for enhanced maneuverability.

Legendary Oshkosh transfer case and proprietary axles developed for military vehicles. They are, literally, battle-tested.

*FOR PERFORMANCE
ON THE JOB—
AND OVER THE
LONG HAUL.*

IT STARTS WITH THE MIXER.

The industry leader in performance, this quality McNeilus steel drums delivers consistent performance, and features a 45" drum opening that is the largest in the business.

A white McNeilus steel drum mixer truck is shown in operation on a construction site. The truck is dumping material from its large drum. The drum has a 45-inch opening. The truck features a white cab with a BP logo. Callout boxes highlight specific features: integrated LED turn signals, work lights, and strobe lights; ergonomic cab optimized for unsurpassed visibility and easier troubleshooting; tighter cramp angle for enhanced maneuverability; and a legendary Oshkosh transfer case and proprietary axles developed for military vehicles, which are literally battle-tested. The truck is white with a large drum and a white cab. The drum has a 45-inch opening. The truck features a white cab with a BP logo. The truck is shown in operation, dumping material from its drum. The truck is white with a large drum and a white cab. The drum has a 45-inch opening. The truck features a white cab with a BP logo. The truck is shown in operation, dumping material from its drum.

Integrated LED turn signals, work lights, and strobe lights.

Ergonomic cab is optimized for unsurpassed visibility and easier troubleshooting.

Tighter cramp angle for enhanced maneuverability.

Legendary Oshkosh transfer case and proprietary axles developed for military vehicles. They are, literally, battle-tested.

*FOR PERFORMANCE
ON THE JOB—
AND OVER THE
LONG HAUL.*

IT STARTS WITH THE MIXER.

The industry leader in performance, this quality McNeilus steel drums delivers consistent performance, and features a 45" drum opening that is the largest in the business.

A white McNeilus steel drum mixer truck is shown in operation on a construction site. The truck is dumping material from its large drum. The drum has a 45-inch opening. The truck features a white cab with a BP logo. Callout boxes highlight specific features: integrated LED turn signals, work lights, and strobe lights; ergonomic cab optimized for unsurpassed visibility and easier troubleshooting; tighter cramp angle for enhanced maneuverability; and a legendary Oshkosh transfer case and proprietary axles developed for military vehicles, which are literally battle-tested. The truck is white with a large drum and a white cab. The drum has a 45-inch opening. The truck features a white cab with a BP logo. The truck is shown in operation, dumping material from its drum. The truck is white with a large drum and a white cab. The drum has a 45-inch opening. The truck features a white cab with a BP logo. The truck is shown in operation, dumping material from its drum.

Integrated LED turn signals, work lights, and strobe lights.

Ergonomic cab is optimized for unsurpassed visibility and easier troubleshooting.

Tighter cramp angle for enhanced maneuverability.

Legendary Oshkosh transfer case and proprietary axles developed for military vehicles. They are, literally, battle-tested.

*FOR PERFORMANCE
ON THE JOB—
AND OVER THE
LONG HAUL.*

IT STARTS WITH THE MIXER.

The industry leader in performance, this quality McNeilus steel drums delivers consistent performance, and features a 45" drum opening that is the largest in the business.

A white McNeilus steel drum mixer truck is shown in operation on a construction site. The truck is dumping material from its large drum. The drum has a 45-inch opening. The truck features a white cab with a BP logo. Callout boxes highlight specific features: integrated LED turn signals, work lights, and strobe lights; ergonomic cab optimized for unsurpassed visibility and easier troubleshooting; tighter cramp angle for enhanced maneuverability; and a legendary Oshkosh transfer case and proprietary axles developed for military vehicles, which are literally battle-tested. The truck is white with a large drum and a white cab. The drum has a 45-inch opening. The truck features a white cab with a BP logo. The truck is shown in operation, dumping material from its drum. The truck is white with a large drum and a white cab. The drum has a 45-inch opening. The truck features a white cab with a BP logo. The truck is shown in operation, dumping material from its drum.

Integrated LED turn signals, work lights, and strobe lights.

Ergonomic cab is optimized for unsurpassed visibility and easier troubleshooting.

Tighter cramp angle for enhanced maneuverability.

Legendary Oshkosh transfer case and proprietary axles developed for military vehicles. They are, literally, battle-tested.



THE PREFERRED

SOURCE

JBP

Stainless steel hydraulic and fuel lines improve reliability.

Efficient hood styling improves cooling efficiency and the air-over-hydraulic hood lift provides access to engine and components.

Available in Cummins or DD13 engines with a CNG option of Cummins-Westport.

Optional Eagle Eye™ Obstacle Detection System alerts drivers to objects in blind spots up to 20 feet away.

Full complement of railings, shields and hand grabs.

Pre-painting and undercoating greatly reduce the risk of rust bleed and acid penetration. Electrical and air lines are easy to locate and identify.

Improved fenders reduce tire spray onto the drum and reduce weight by 70 pounds.

Patented Load Span Tag Axle (LSTA) features a hydraulic system with a higher weight rating than other tag axles. Delivers a smoother ride and a 22-inch axle lift.

WHEN DRIVERS PERFORM BETTER, MIXERS PERFORM BETTER.



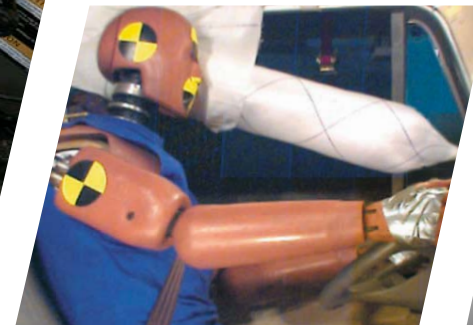
The S-Series cab is engineered with one purpose: to provide drivers with the best possible ergonomics and working environment. The larger windshield and side windows give the driver a clear view and make it easier to maneuver and position the truck. Direct sight lines to gauges and controls on the overhead panel help drivers focus on concrete placement. The automotive-style electronic gauges display critical vehicle/mixer information—drum rpm/direction, text message fault codes and self-diagnostic results. The optional tilt/telescoping steering column and integrated automotive style climate control system helps maximize driver comfort and performance, whatever the situation.

The S-Series is as easy to maintain as it is to drive. A diagnostic port is easily accessible from the driver's seat. There are no floor-mounted accessories to get in the way. Automotive-style fuses are conveniently located throughout the service panel behind the driver's seat.



MORE THAN A CAB. A COMMAND CENTER.

Built for performance and comfort – the S-Series cab is loaded with forward thinking engineering and technology, which enables your drivers to be more efficient and more productive. We even developed the only front-discharge trainer cab designed exclusively for two people, with mixer controls accessible by both occupants for an ideal hands-on learning environment for trainees.



SIDE ROLL PROTECTION FOR YOUR MOST VALUABLE ASSETS.

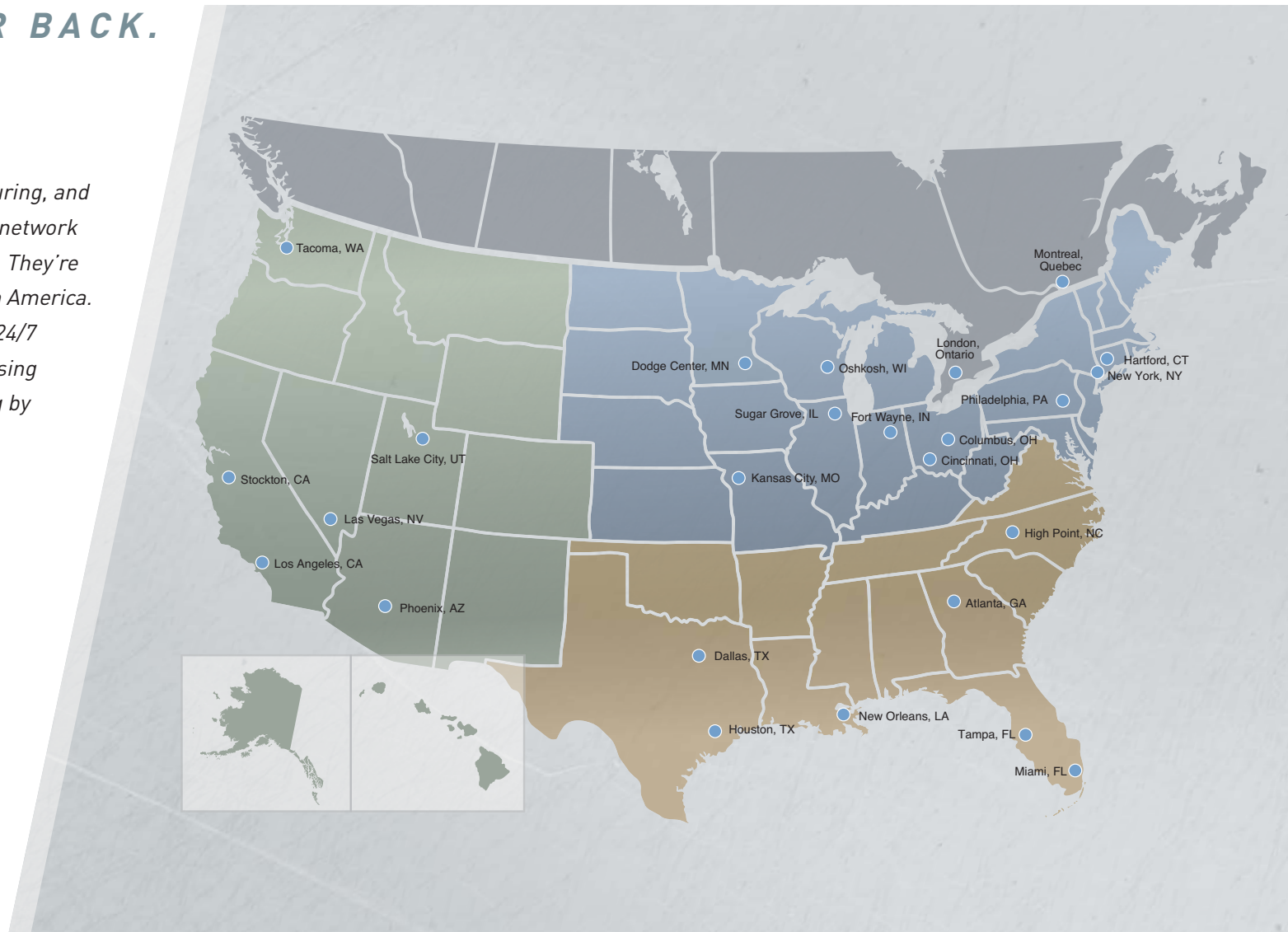
Rolltek® combines side airbag protection with the latest advancements in seat belt technology to significantly reduce the potential for death or serious injury in a side roll event.

TRUE VISION HD.

With McNeilus® Street Smart Parts® Vision Systems, you get everything but distortion. True Vision HD means a much better overall view for safer backing.

WE'VE GOT YOUR BACK. PERIOD.

We listen to our customers before, during, and after the sale. Contact our dedicated network of branch offices and service centers. They're strategically located throughout North America. We offer same day parts shipments, 24/7 response, a stock truck program, leasing and financing options. We're standing by to answer questions.



McNeilus Companies, Inc.
524 East Highway St.
P.O. Box 70
Dodge Center, MN 55927
507-374-6321
Street Smart Parts: 888-686-7278



www.mcneiluscompanies.com
www.StreetSmartParts.com



www.facebook.com/mcneilusconcrete

© 2013 McNeilus Companies, Inc. McNeilus, the McNeilus logo, and Bridgemaster are registered trademarks of McNeilus Companies Inc., Dodge Center, MN, USA. Oshkosh and the Oshkosh logo are registered trademarks of Oshkosh Corporation, Oshkosh WI, USA. All other designated trademarks are the property of their respective owners. Specifications, descriptions, and illustrations in this brochure are accurate as shown at the time of publication, but are subject to change without notice. Images may include optional equipment and accessories and may not include all standard equipment.